



# Main House Bedrooms

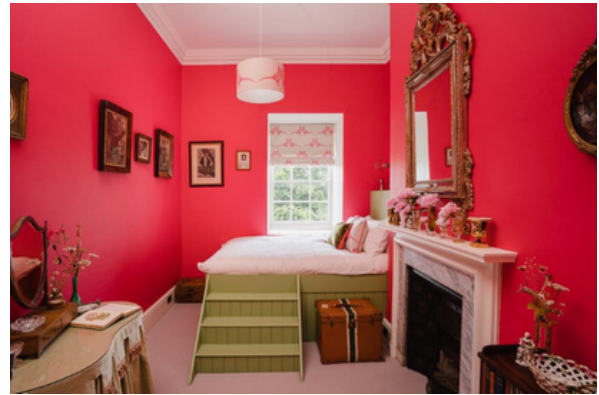
The Wedding of.....

Due to the age of the house, we are afraid that no rooms have disabled access and are not accessible for those with limited mobility.



1. Sophie's Bedroom • King bed • En-suite with bath  
*(hand held shower head, view to front of house)*

Names of occupiers: .....  
Allergies: .....  
Number of nights: .....



2. Peter's Bedroom • Double • Bathroom with shower  
*(Walk in power shower, view to front of house)*

Names of occupiers: .....  
Allergies: .....  
Number of nights: .....



3. Ben's Bedroom • Twin • Bathroom with bath  
*(2 single beds only. Bath with hand held shower head, shared with Alice, view to front of house )*

Names of occupiers: .....  
Allergies: .....  
Number of nights: .....



4. Alice's Bedroom • Twin/Superking • Bathroom with bath  
*(Bath with hand held shower head, shared with Ben's room, view of front of house )*

Names of occupiers: .....  
Allergies: .....  
Number of nights: .....  
Double or 2 singles?.....



5. Jonny's Bedroom • Superking • En-suite with shower  
*(view to the garden, walk in shower)*

Names of occupiers: .....  
Allergies: .....  
Number of nights: .....



6. Emma's Bedroom • Double • En-suite with bath & shower  
*(Child friendly for up to two children, view to gardens)*

Names of occupiers: .....  
Allergies: .....  
Number of nights: .....  
Number of Z-bed's / Cots.....



## Main House Bedrooms



7. Lucy's Bedroom • Double • Bathroom with bath  
(hand held shower head over bath, view to garden)

Names of occupiers: .....  
Allergies: .....  
Number of nights: .....

8. David's Bedroom • Double • En-suite with 2x copper baths  
(both with hand held shower head, view to garden)

Names of occupiers: .....  
Allergies: .....  
Number of nights: .....



9. William's Bedroom • Double • Bathroom with bath  
(Bath, no hand held shower head - view to gardens)

Names of occupiers: .....  
Allergies: .....  
Number of nights: .....

10. Hermione's Bedroom • Double • En-suite with bath  
(Hand held shower head and child friendly for up to 2 children, view to garden)

Names of occupiers: .....  
Allergies: .....  
Number of nights: .....  
Number of Z-bed's / Cots.....

Please allocate bedrooms using the room plan and photographs, and send us a copy at least three months prior to your event.

- Check in is from 3:00pm. Early check ins are charged at £50 per room and must be pre-arranged with the events team. Check out of the house is strictly by 11:00am on the day of your departure.
- Please note that unfortunately, Pylewell House and penthouse **does not** have disabled access to any of the bedrooms.
- Guests not staying in the house are not permitted access into the house and bedrooms without the prior permission of Pylewell Park.
- No food is allowed in bedrooms.
- Rooms are taken on a B&B basis. Breakfast is provided for all house and penthouse guests.
- No smoking or vaping is permitted inside the house and penthouse.
- Bedroom 3 (Ben) is a twin and Bedroom 4 (Alice) can be made up as a superking or a twin. These two rooms share one bathroom.
- Please note that there are no locks on bedroom doors. Guests bringing valuable personal belongings do so at their own risk.
- Children must be supervised at all times. We welcome a maximum of five children to stay with us. Babies in cots and young children in z-beds can be accommodated in Rooms 6 and 10 only, with a maximum of 2 children per bedroom.
- Use of our cots will incur costs of £25 each per night. Use of our z-beds will incur costs of £50 per bed per night. Z-beds are strictly for children only. Please note we are able to provide 2 travel cots and 4 z-beds only.
- Please give full details of children staying, their ages and required sleeping arrangements. Please note we do not allow guests to bring their own blow up beds or camp beds, all additional beds must be booked through Pylewell.





## Penthouse Bedrooms

Our penthouse is a three bedroom self contained apartment right at the top of the house. It has one shared bathroom, a shared loo, and large sitting room and kitchenette. It is both child and dog friendly.



1. **Bedroom 1 • Double • Shared bathroom**  
(Child friendly for up to 2 children. Bath with over head shower, view to gardens.)

2. **Bedroom 2 • Double • Shared bathroom**  
(Child friendly for up to 2 children. Bath with over head shower, view to front of house.)

Names of occupiers: .....

Allergies: .....

Number of nights: .....

Names of occupiers: .....

Allergies: .....

Number of nights: .....



3. **Bedroom 3 • King bed • Shared bathroom**  
(Bath with over head shower, view to gardens)

Names of occupiers: .....

Allergies: .....

Number of nights: .....

Please allocate bedrooms using the room plan and photographs, and send us a copy at least three months prior to your event.

- Check in is from 3:00pm. Check out is by 11:00am on the day of your departure.
- Please note that Pylewell Penthouse **does not** have disabled access unfortunately.
- No food is allowed in bedrooms.
- Rooms are taken on a B&B basis. Breakfast is provided for all house and penthouse guests.
- No smoking or vaping is permitted inside the house and penthouse.
- We allow a maximum of 2 well behaved dogs that are part of bridal party in the penthouse. An additional £50 cleaning fee will be incurred for this. The bride and groom can of course have their dog for any pictures around the house.
- Please do not leave dogs unattended in the penthouse. Please request dog sitting information if required.
- Please note that there are no locks on bedroom doors. Guests bringing valuable personal belongings do so at their own risk.
- Children must be supervised at all times. Use of our cots will incur costs of £25 each per night. Use of our z-beds will incur costs of £50 per bed per night. Z-beds are strictly for children only. Please note we are able to provide 2 travel cots and 4 z-beds only. We do not allow additional mattresses or rollaway beds. We do not allow guests to sleep on the sofas within the penthouse.
- Please note the penthouse is up three flights of stairs and there is **no lift** due to the age of the house. Please ensure any guests who you allocate these rooms too are aware of this.
- Please give full details of children staying (names, ages and sleeping arrangements) and also give the details of any dogs staying.